



## Summary of Monthly Operations – January 2013

### General

In total, the 95 Express Lanes:

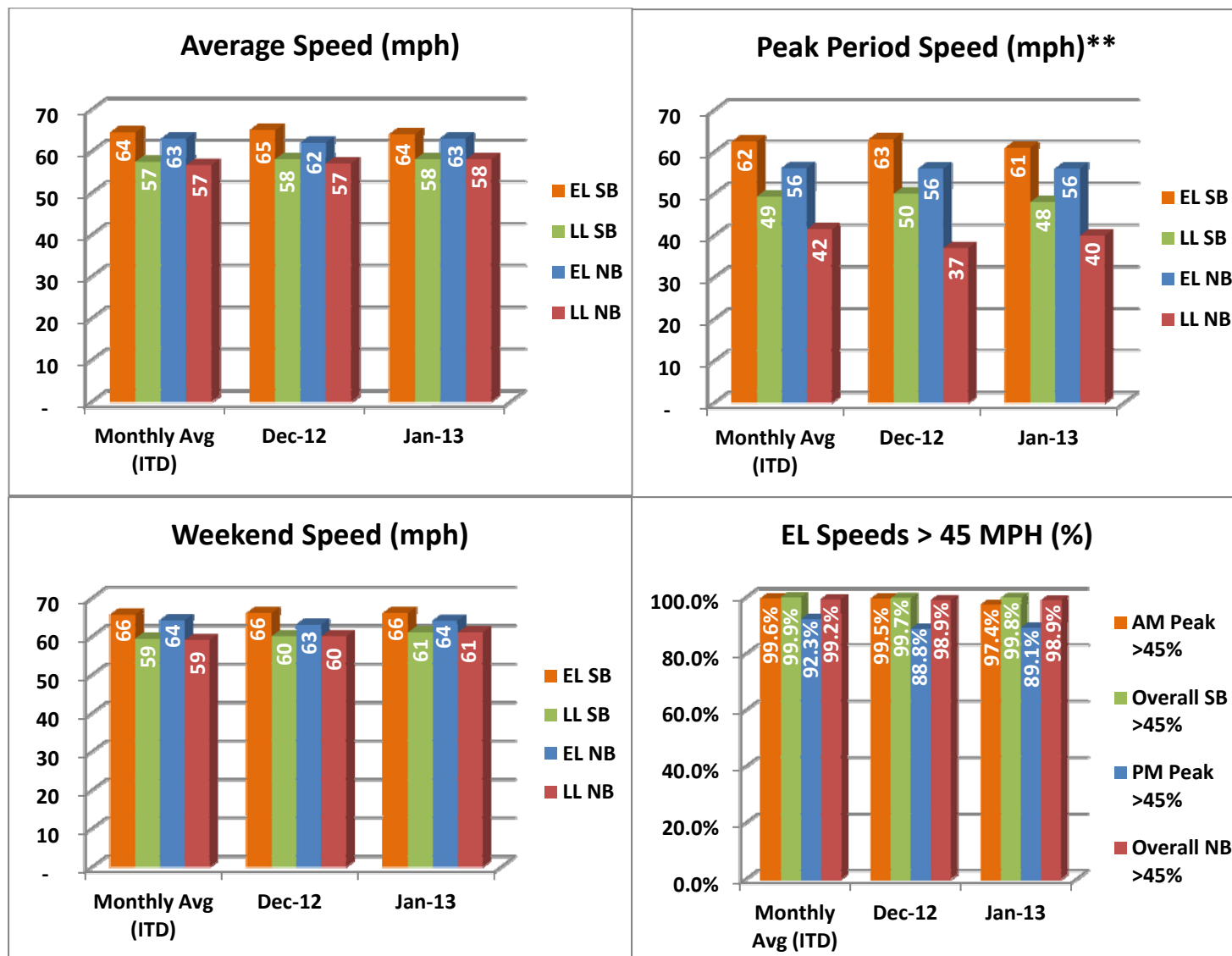
- ✓ Serviced 1,859,593 vehicle trips in January 2013, bringing the total since opening (December 5, 2008) to approximately 68.0 million trips.
- ✓ Had estimated monthly toll revenue of \$1.73 million in January 2013, bringing the total revenue to date to approximately \$53.3 million.
- ✓ Decreased to a total of 8,922 registered vehicles, resulting in 35,914 toll exempt trips.

<u>January 2013 Statistics</u>	<u>Southbound</u>			<u>Northbound</u>		
<b>Total Trips</b>	951,654			907,939		
<b>Exempt Trips</b>	18,278			17,636		
<b>Revenue</b>						
	\$866,895			\$860,982		
<b>Tolls</b>						
- Range	\$0.00 - \$7.00			\$0.00 - \$7.00		
- Avg. Weekday	\$1.26			\$1.34		
- Avg. Peak Period**	\$2.15			\$3.06		
- Avg. Weekend	\$0.33			\$0.27		
- Avg. Off Peak	\$0.94			\$0.69		
- 85 <sup>th</sup> Percentile Weekday	\$2.75			\$2.75		
<b>Volume (veh)</b>						
	<b>EL</b>	<b>LL</b>		<b>EL</b>	<b>LL</b>	
- Avg. Weekday	33,262	104,019		31,857	99,078	
- Avg. Peak Period**	8,768	17,186		8,750	17,835	
<b>Speed (mph)</b>						
	<b>EL</b>	<b>LL</b>	<b>Δ</b>	<b>EL</b>	<b>LL</b>	<b>Δ</b>
- Avg. Overall	64	58	6	63	58	5
- Avg. Peak Period**	61	48	13	56	40	16
<b>Operated Above 45 MPH</b>						
	99.8%			98.9%		
<b>Remained Open to Motorists</b>						
	94.6%			94.5%		
<b>Closed due to Planned Construction</b>						
	3.3%			3.1%		
<b>Closed due to Non-recurring Events</b>						
	2.1%			2.4%		
<i>EL (Express Lanes); LL (Local Lanes)</i>						
<i>**Peak Period is defined as 6-9 AM (southbound) and 4-7 PM (northbound).</i>						



## Operations/Traffic Statistics - Speed Data

\*\* Peak Period is defined as 6-9 AM (southbound) and 4-7 PM (northbound).

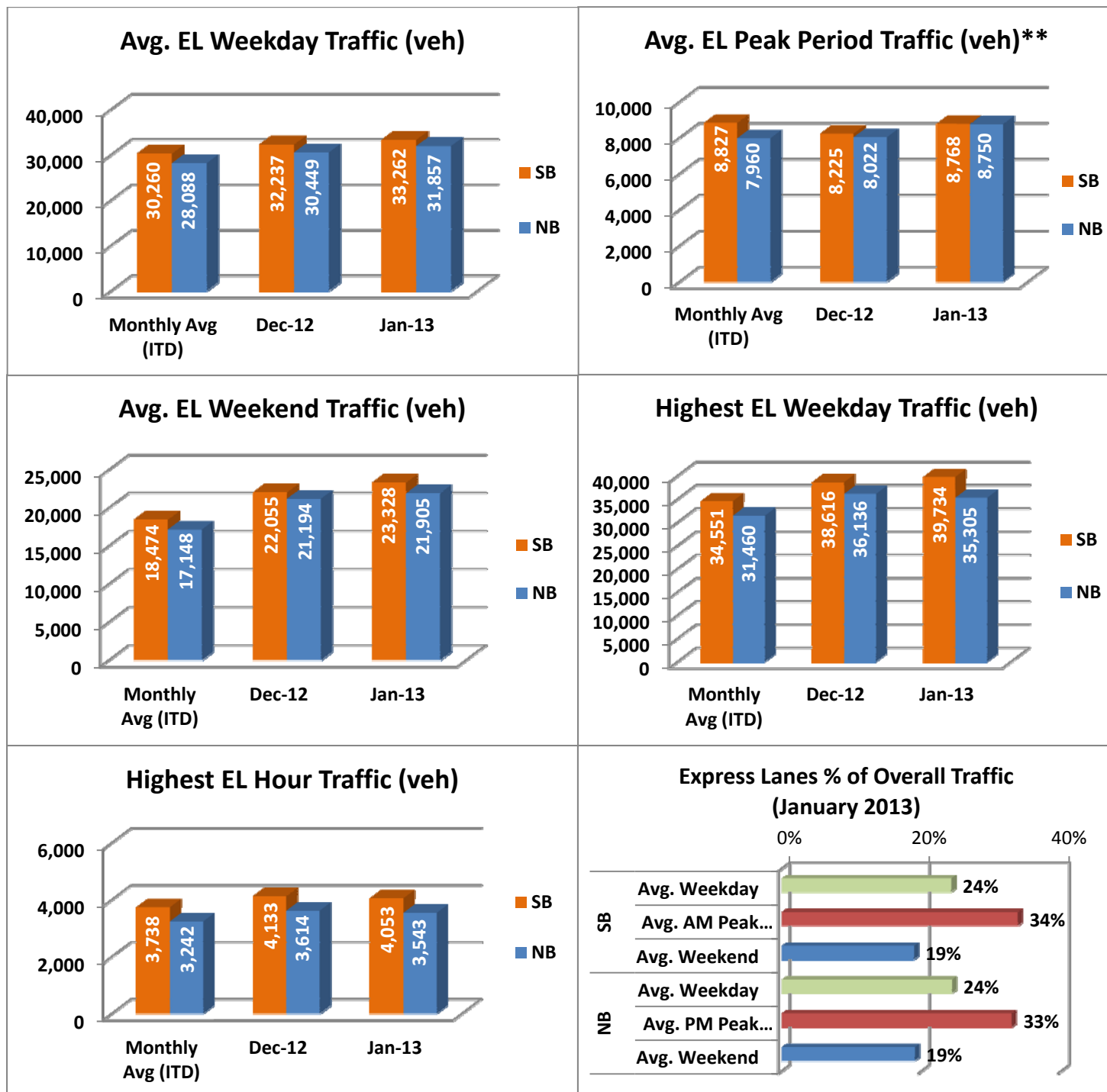


NOTE: ITD = Inception to Date



## Operations/Traffic Statistics - Volume Data

\*\* Peak Period is defined as 6-9 AM (southbound) and 4-7 PM (northbound).

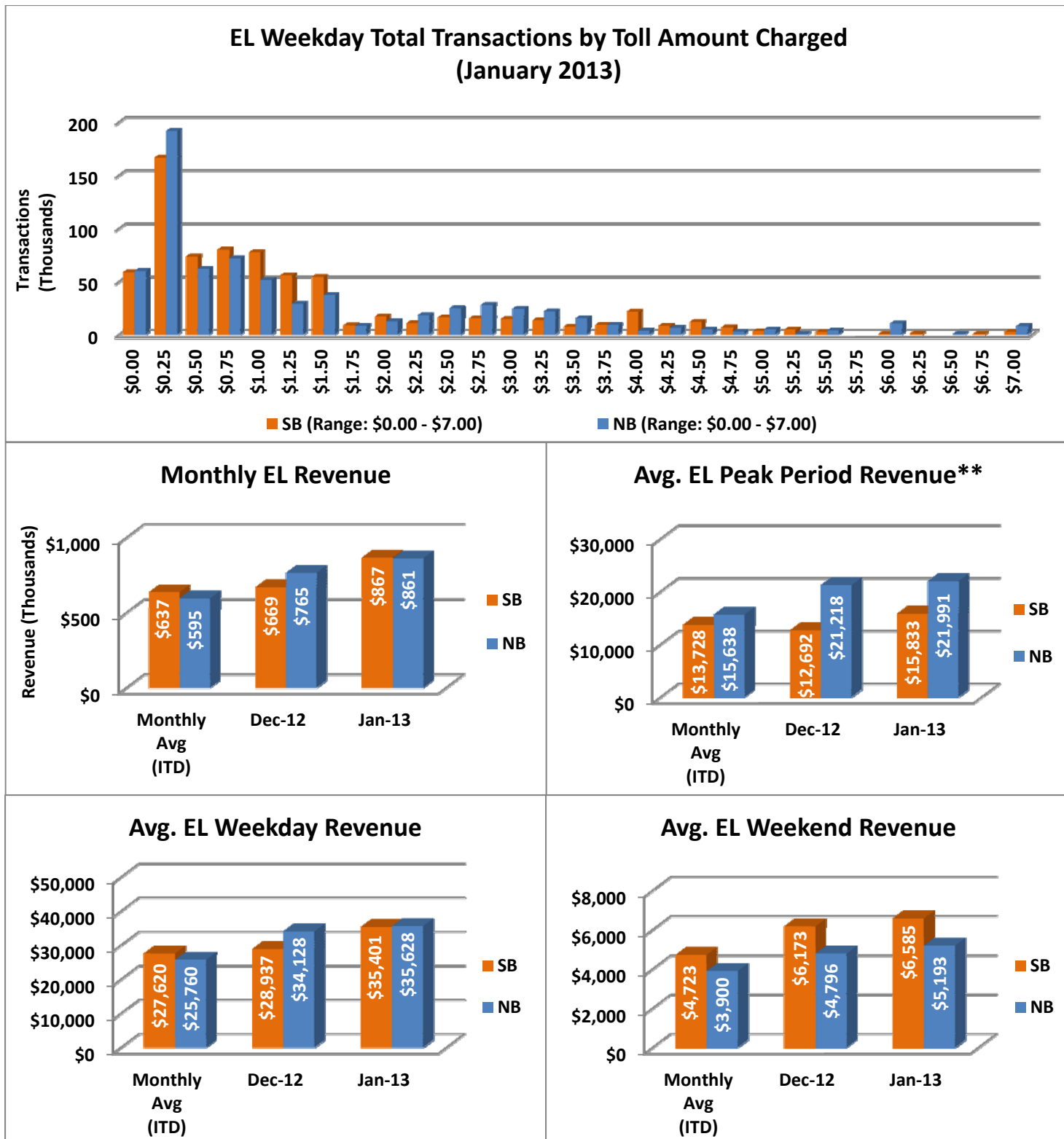


NOTE: ITD = Inception to Date



## Revenue/Tolls Statistics

\*\* Peak Period is defined as 6-9 AM (southbound) and 4-7 PM (northbound).

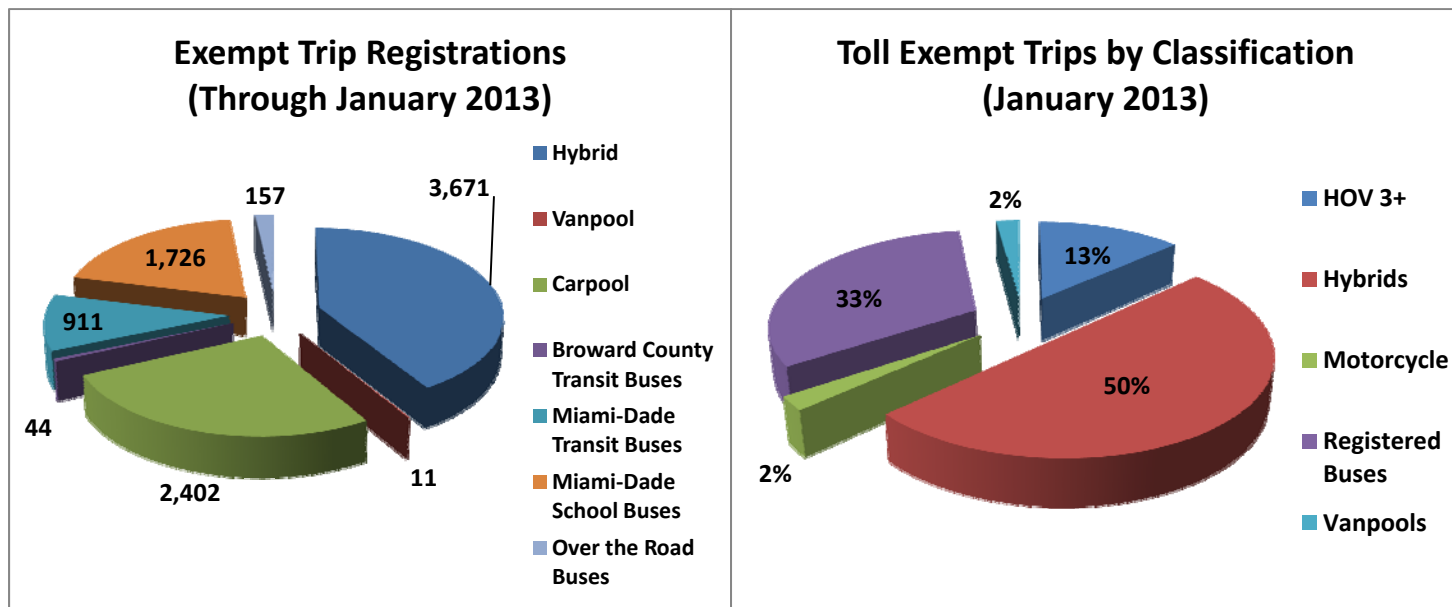


NOTE: ITD = Inception to Date

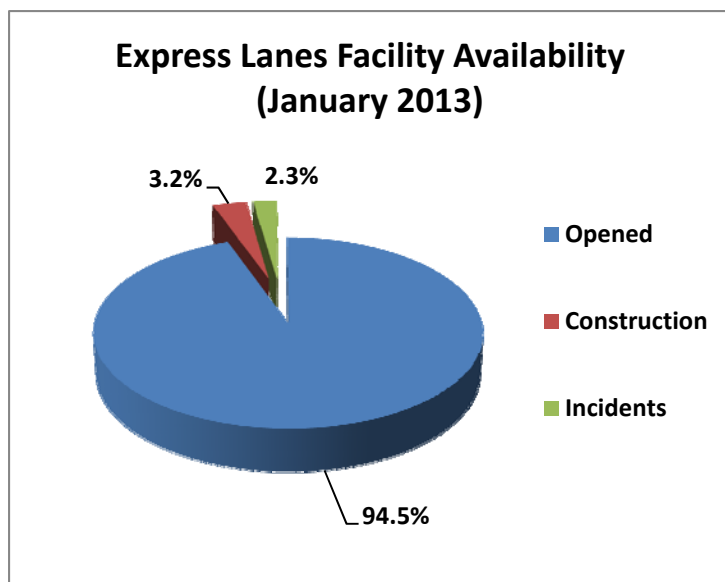


## Registrations—Toll Exempt Trips

The total registrations through January 2013 decreased to 8,922. The 35,914 Toll Exempt Trips for this month are shown by classification below.



## Facility Availability



The entire 95 Express lanes (both directions) were open to motorists 94.5% of the time, while closed 3.2% due to 10 planned construction/maintenance events (each lasting approximately 4 hours, 47 minutes in duration, on average) and 2.3% due to 141 non-recurring events (each lasting approximately 14.3 minutes in duration, on average).